

# TAMS ANNEMARIE

Multicat

 **TAMS GROUP**

VESSEL SPECIFICATION SHEET



## OVERVIEW

Primary Specifications	
Registry	Australia
Class	BV / 1*HULL MACH AUT-UMS / AMSA DCV 2C & 2B
Official Number / Unique Identifier	OF859619 / 859619
IMO Number	9587520
Length (Overall)	21.60m
Breadth (Moulded)	9.04m
Depth (Moulded)	3.0m
Design Draft	2.04m
Gross Registered Tonnage	135T
Vessel Weight (lightship)	198.8T
Clear Deck Space	140m <sup>2</sup>
Cargo Deadweight	65.9T
Deck Loading	6.0T/m <sup>2</sup>
Accommodation	5

Machinery	
Propulsion	2 x Fixed Pitch Propellers
Kort Nozzle	Yes
Main Engines	2 x QSK19 CME Cummins 567kW each
Total Propulsion Power	1134kW
Gearbox	2 x Reintjes WAF 364L 4.48:1
Generator	2 x Caterpillar C4.4
Operational Performance	
Bollard Pull	23.2T
Full Operating Speed	10 Knots / 160 L / hr
Economic Operating Speed / Consumption	8 Knots / 80-90 L / hr
Port Consumption	10L / hr

The data on this specification is published in good faith and for general information purpose only. It does not warrant its accuracy or completeness and to the full extent allowed by law excludes liability.



## OVERVIEW

Tank Capacities	
Fuel	56.1m <sup>3</sup>
Fresh Water	28.0m <sup>3</sup>
Water Ballast	32.0m <sup>3</sup>
Lube Oil	2.7m <sup>3</sup>
Waste Oil	1.64m <sup>3</sup>
Sullage	Sewage treatment plant
Grey Water	1.64m <sup>3</sup>
Fuel Transfer Pump	ZW Pompen Beat S80
Bilge and Ballast Pump	ZW Pompen S90 G30T
Fire Pump	ZW Pompen S90 G30T
Navigational/Communications Equipment	
Tow Winch	50T Pull First Layer
Anchor Handling Winch	50T Pull First Layer
Tugger Winch	10T
Anchor Windlass	40T 13.9m Chain
Shark Jaws	Chain 2.5"max (100T SWL) Wire 64mm max (100T)
Towing Hook	10T Quick Release
Stern Roller	Bow Roller
Deck Crane	Helia HLRM 140-4S 8.18T @ 14.09m

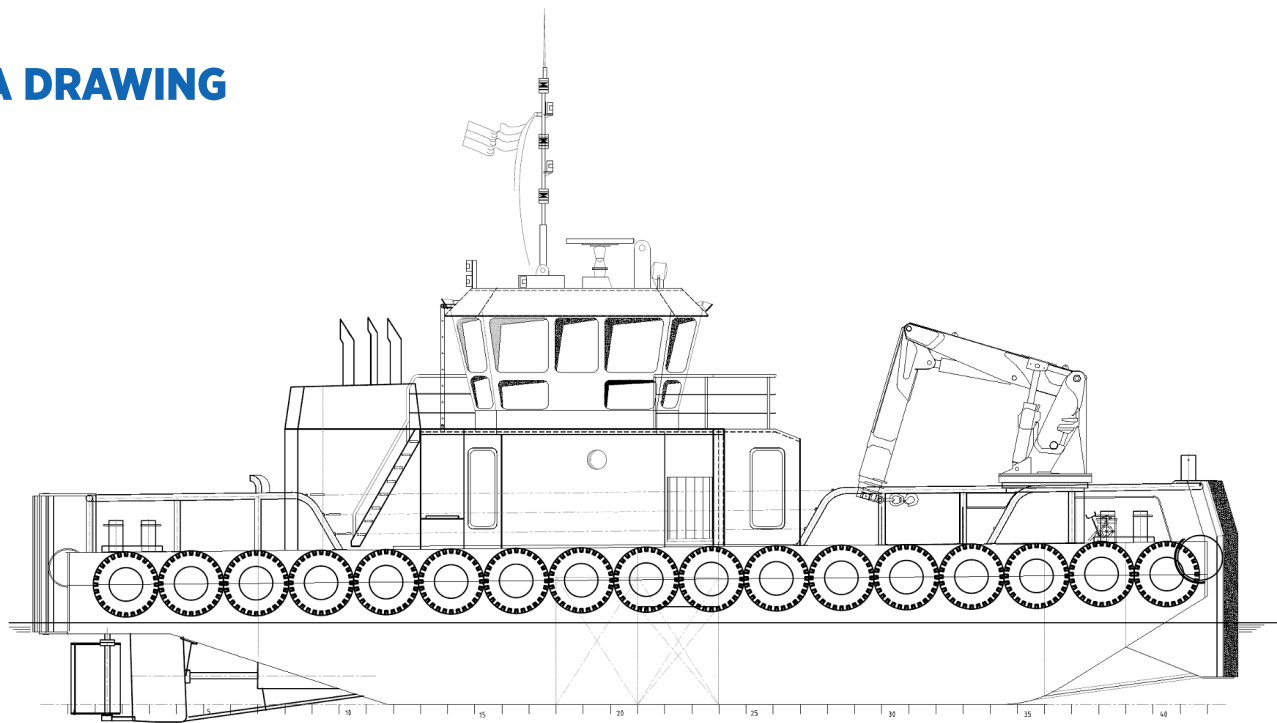
Navigational/Communications Equipment	
Radar System	Furuno
Depth Sounder	Furuno FCV-585
HF Radio	GMDSS Furuno Felcom 15
VHF Radio	2 x Sailor RT 5022 with DSC
Call Sign	VNW6381
Compass	1 x Cassel Plate
GPS	2 x Furuno GP-150
Chart Plotter	Furuno Navnet
Auto Pilot	Sea Pilot 75
AIS	Furuno FA-150
MMSI	503486600



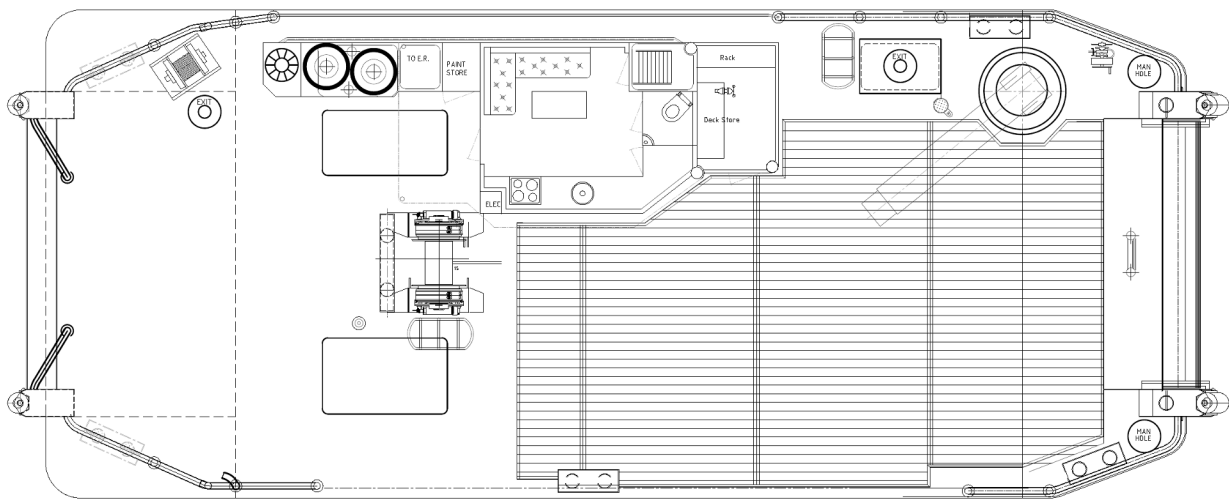
The data on this specification is published in good faith and for general information purpose only. It does not warrant its accuracy or completeness and to the full extent allowed by law excludes liability.



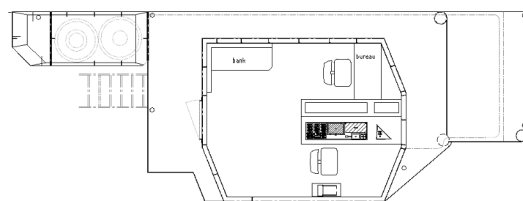
## GA DRAWING



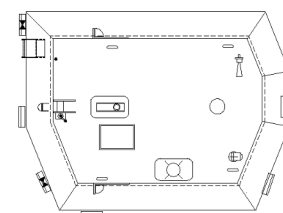
PROFILE



MAIN DECK PLAN



BRIDGE DECK



TOP DECK



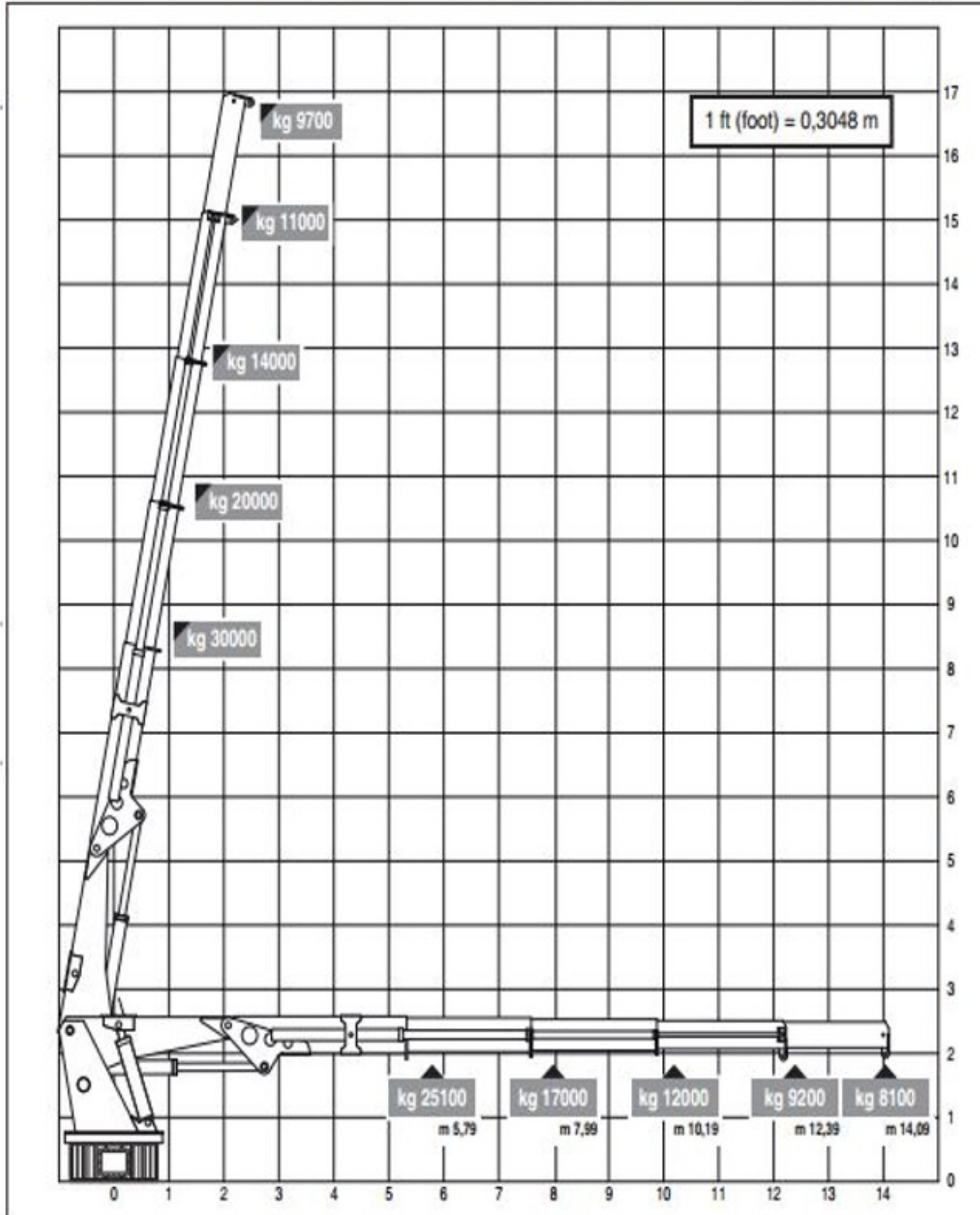
The data on this specification is published in good faith and for general information purpose only. It does not warrant its accuracy or completeness and to the full extent allowed by law excludes liability.



**WORKING DIAGRAM  
DIAGRAMMA DI LAVORO**

**HLRM 140-4S**

**(ONLY FOR USE WITH HOOK - SEA STATE - 0 - OR HARBOUR CONDITION)**



The data on this specification is published in good faith and for general information purpose only. It does not warrant its accuracy or completeness and to the full extent allowed by law excludes liability.

